



BRIGHAM AND WOMEN'S HOSPITAL
DEPARTMENT OF MEDICINE

UNDERREPRESENTED IN MEDICINE FACULTY DIRECTORY



Valerie E. Stone, M.D., M.P.H.

On behalf of the entire leadership of the BWH Department of Medicine, I am pleased to present this inaugural directory of underrepresented in medicine (URM) faculty in our Department. It is our hope that this Directory will serve to promote connection, collaboration and community amongst our URM faculty. We are also hopeful that this Directory will enhance the ease with which our URM residents and fellows can identify and connect with URM faculty who can serve as treasured advisors, mentors and role models. Finally, this Directory provides a wonderful opportunity and venue in which we proudly showcase the amazing achievements and breadth of expertise of our URM faculty. I hope you enjoy perusing this exciting new resource, and find it to be one that you value and will share with other colleagues.

All my best,

A handwritten signature in black ink that reads "Valerie E. Stone". The signature is fluid and cursive.

Valerie E. Stone, M.D., M.P.H.
Vice Chair for Diversity, Equity and Inclusion
BWH Department of Medicine



JONATHAN ABRAHAM, M.D., PH.D.

Assistant Professor, Harvard Medical School
Division of Infectious Diseases
Email: jabraham4@partners.org

Medical School: Harvard Medical School
Graduate School: Harvard Medical School
Residency: Internal Medicine, Brigham and Women's Hospital
Fellowship: Infectious Diseases, Brigham and Women's Hospital and Massachusetts General Hospital

Dr. Abraham is an Assistant Professor of Microbiology in the Department of Microbiology at Harvard Medical School, and an Associate Physician in the Division of Infectious Diseases at Brigham and Women's Hospital. He is a physician-scientist and his current work focuses on the mechanisms of cellular entry and antibody neutralization of emerging viruses. Dr. Abraham graduated from Harvard College with a major in biochemistry, and from the MD-PhD program at Harvard Medical School, through which he obtained his Ph.D. in biophysics. He completed residency in Internal Medicine at Brigham and Women's Hospital and a fellowship in Infectious Diseases at Brigham & Women's Hospital and Massachusetts General Hospital. He is a recipient of the NIH Director's Early Independence Award and a Burroughs Wellcome Fund Career Award for Medical Scientists. His research uses methods in human immunology, molecular biology, and structural biology to study and develop therapies against viruses that cause highly lethal human diseases, including encephalitis and hemorrhagic fevers.



ANA PAULA ABREU METZGER, M.D., PH.D.

Instructor in Medicine, Harvard Medical School
Division of Endocrinology, Diabetes, and Hypertension
Email: apabreu@bwh.harvard.edu

Medical School: Federal University of Minas Gerais, Belo Horizonte, Brazil
Graduate School: Sao Paulo University, Sao Paulo, Brazil
Residency: Internal Medicine, Hospital Joao XXIII/Fundacao Hospitalar do Estado de Minas Gerais, Belo Horizonte, Brazil
Fellowship: Clinical and Research, Endocrinology, Brigham and Women's Hospital

Dr. Abreu Metzger is a physician-scientist in the Division of Endocrinology, Diabetes, and Hypertension. Her primary research focus on the investigation of genetic and epigenetic regulation of GnRH secretion to better understand what triggers puberty initiation and molecular mechanisms regulating the reproductive system. She also has an interest in pituitary disorders and has been studying genetic drivers of ACTH tumors. She sees patients in the Pituitary Neuroendocrine Center and in the Endocrine Genetics Clinic.



MAUREEN ACHEBE, M.B., B.S., M.P.H.

Assistant Professor of Medicine, Harvard, Medical School
Division of Hematology
Email: machebe@bwh.harvard.edu

Medical School: University of Port Harcourt College of Health Sciences

Graduate School: Harvard T.H. Chan School of Public Health

Residency: Internal Medicine, Easton Hospital

Fellowship: Hematology/Medical Oncology, Yale New Haven Hospital

Dr. Achebe is the Clinical Director for Hematology Services at Dana-Farber Cancer Institute, Medical Director of the Brigham and Women's Hospital Ambulatory Infusion Center and the Director of the Sickle Cell Disease Center at BWH/DFCI. Her career activities are focused on innovations that improve the health of patients with hematology disorders, particularly sickle cell disease (SCD) and iron deficiency. Her research is on healthcare delivery improvements and other clinical research in hematology. She also spends time educating and mentoring students, residents, and fellows. She is on the Board of the Greater Boston Sickle Cell Disease Association of America.



JORGE ALVAREZ, M.D., PH.D.

Instructor in Medicine, Harvard Medical School
Division of Cardiovascular Medicine
Email: jalvarez@bwh.harvard.edu

Medical School: University of Miami, Leonard M. Miller School of Medicine

Graduate School: University of Miami, Leonard M. Miller School of Medicine

Residency: Internal Medicine, Rhode Island Hospital, Warren Alpert Medical School of Brown University

Fellowship: Cardiology, Rhode Island Hospital, Warren Alpert Medical School of Brown University

Dr. Alvarez sees patients at Brigham and Women's Faulkner Hospital in the Brigham and Women's Medical Specialties group and on the Brigham and Women's Hospital's inpatient cardiology units. Dr. Alvarez is also part of BWFH's Special Testing Center, where he provides transthoracic and transesophageal echocardiography, as well as electrocardiography, cardioversion and stress testing services.

Dr. Alvarez studied Biology at Harvard College before attending medical school at the University of Miami. There he also earned his Ph.D. in Epidemiology. He then completed his residency in Internal Medicine and a fellowship in Cardiovascular Disease at Brown University. His clinical interest is in cardio-oncology, where he provides cardiac evaluation and care for patients with cancer prior to, during, and after oncologic treatment.



AUGUSTO CABALLERO-ROBLES, M.D.

Assistant Professor of Medicine, Harvard Medical School
Division of Global Health Equity
Email: ecaballero@bics.bwh.harvard.edu

Medical School: National University of Mexico Medical School, Mexico City, Mexico

Graduate School: National University of Mexico, Mexico City, Mexico

Residency: Petroleo Mexicanos National Hospital, Mexico City, Mexico

Fellowships: Endocrinology and Metabolism, National Institute of Nutrition and Medical Sciences Salvador Zubiran, Mexico City; Endocrinology and Metabolism, Lahey Clinic/Beth Israel Deaconess Medical Center/Joslin Clinic, Boston, MA

Dr. Caballero-Robles is an Internist and Endocrinologist who has specialized in the field of diabetes since 1996 and through his teaching, clinical and research endeavors has had an impact in improving diabetes care at local, regional, national and international levels.



JORGE CASTILLO, M.D.

Associate Professor of Medicine, Harvard Medical School
Division of Medical Oncology
Email: jorgecastillo@dfci.harvard.edu

Medical School: Universidad Autonoma Metropolitana, Mexico City, Mexico

Graduate School: School of Public Health, Brown University

Residency: Internal Medicine, MetroWest Medical Center, University of Massachusetts Medical School

Fellowship: Hematology and Oncology, Rhode Island Hospital, Warren Alpert Medical School of Brown University

Dr. Castillo was born in Peru, received his medical degree in Mexico City, and completed his Internal Medicine and Hematology & Oncology training at the University of Massachusetts and Brown University, respectively. Dr. Castillo is an Associate Professor at Harvard Medical School and serves as the Clinical Director of the Bing Center for Waldenström Macroglobulinemia at the Dana-Farber Cancer Institute, and he sees approximately 1,000 patients with Waldenström Macroglobulinemia per year in his clinic. Dr. Castillo is also the principal investigator in a series of innovative clinical trials evaluating highly effective non-chemotherapeutic approaches for patients with Waldenström Macroglobulinemia. Dr. Castillo is a member of the NCCN Committee for Myeloma, Amyloidosis and Waldenström Macroglobulinemia. He has authored more than 200 peer-reviewed articles and has published his research in the *New England Journal of Medicine*, *Lancet Oncology*, *Journal of Clinical Oncology* and *Blood*.



MANUELA CERNADAS, M.D.

Assistant Professor of Medicine, Harvard Medical School
Division of Pulmonary and Critical Medicine
Email: mcernadas@partners.org

Medical School: Perelman School of Medicine at the University of Pennsylvania

Residency: Internal Medicine, Brigham and Women's Hospital

Fellowship: Pulmonary and Critical Care Medicine, Brigham and Women's Hospital

Dr. Manuela Cernadas is a physician at Brigham and Women's Hospital and she is also an Assistant Professor of Medicine at Harvard Medical School. She received her medical degree from the University of Pennsylvania School of Medicine (now known as the Perelman School of Medicine). She then completed a residency in Internal Medicine and a fellowship in pulmonary disease and critical care medicine at BWH. She is board certified in pulmonary disease, internal medicine, and critical care medicine. Dr. Cernadas's clinical research focuses on the mechanisms of immune activation, specifically investigating the immunologic pathways that contribute to the pathobiology of airway diseases. She has authored more than 30 peer-reviewed publications and has received funding from the National Institutes of Health.



PAULETTE CHANDLER, M.D., M.P.H.

Assistant Professor of Medicine, Harvard Medical School
Division of General and Internal Medicine, Division of Preventive Medicine
Email: pchandler@bwh.harvard.edu

Medical School: Duke University

Graduate School: Harvard T.H. Chan School of Public Health

Residency: Internal Medicine, Brigham and Women's Hospital

Community Health Fellowship: Harvard T.H. Chan School of Public Health

Dr. Chandler is a general internist and nutrition and cancer epidemiologist. She sees patients in the Phyllis Jen Center for Primary Care. Her research in the Division of Preventive Medicine focuses on understanding the connection between nutrition, novel biomarkers generated through the "-omics" technology, and cancer prevention. Her clinical interests include nutrition, cancer and diabetes prevention, and women's health. She is passionate about educating the public on the power of healthy lifestyle choices for preventing disease and promoting wellness.



JORGE CHAVARRO, M.D., SC.D.

Associate Professor of Medicine, Harvard Medical School
Channing Division of Network Medicine
Email: jchavarr@hsph.harvard.edu

Medical School: National University of Colombia, Bogota, Colombia
Graduate School: Harvard T.H. Chan School of Public Health
Fellowships: Nutrition, Harvard T.H. Chan School of Public Health;
Epidemiology, Brigham and Women's Hospital

Dr. Chavarro's research focuses on investigating the role of diet and the interaction between dietary and genetic factors in the pathogenesis of diseases affecting reproductive and hormone sensitive organs, particularly malignancies of reproductive organs. This broad interest is currently focused in two areas. First, he is investigating the role of fatty acids and their metabolism in the development and progression of prostate cancer. Using data from ongoing cohort studies, Dr. Chavarro studies the relationships of dietary fatty acid intakes and biomarkers of fatty acid intake and their metabolism, including de novo lipogenesis, with prostate cancer risk and survival. Also, because prostate cancer treatment often has adverse cardiovascular and metabolic consequences, he is investigating the role of modifiable lifestyle factors on non-cancer mortality, particularly cardiovascular disease, among men with prostate cancer.

In addition to his prostate cancer work, Dr. Chavarro is currently investigating how different dietary and lifestyle factors are related to male and female fertility and infertility treatment outcomes with the goal of identifying strategies for fertility preservation in cancer survivors and in the general population.



CHERYL CLARK, M.D., SC.D.

Assistant Professor of Medicine, Harvard Medical School
Division of General Internal Medicine and Primary Care
Email: crclark@partners.org

Medical School: Stanford University School of Medicine
Graduate School: Stanford University, Harvard T.H. Chan School of Public Health
Residency: Internal Medicine, Brigham and Women's Hospital

Dr. Clark is a Hospitalist and researcher in the Brigham and Women's Hospital Division of General Medicine and Primary Care, and Director of Health Equity Research and Intervention in the Center for Community Health and Health Equity at the BWH. Dr. Clark is also the Director of the Leadership in Health Equity Pathway (LHEP) within the Internal Medicine Residency Program. Dr. Clark's research focuses on social determinants of healthy aging and racial and ethnic disparities in health care utilization in aging populations. She is the recipient of the 2006 Brigham and Women's Minority Career Development Award, the 2006 Golden Stethoscope Award for excellence in teaching, the 2009 H. Richard Nesson Fellowship in Community Health, the 2010 REACH partner award, and the 2014-2016 Kaiser Permanente Burch Minority Leadership Award.



NATHAN T. CONNELL, M.D., M.P.H., F.A.C.P.

Assistant Professor of Medicine, Harvard Medical School
Division of Hematology, Brigham and Women's Hospital
Clinical Chief of Hematology, Brigham and Women's Faulkner Hospital
Email: NTConnell@bwh.harvard.edu

Medical School: University of Miami

Graduate School: Barry University

Graduate School: Harvard T.H. Chan School of Public Health

Residency: Internal Medicine, Warren Alpert Medical School of Brown University

Fellowship: Hematology & Medical Oncology, Warren Alpert Medical School of Brown University

Dr. Connell is a hematologist focused on thrombosis and hemostasis, particularly von Willebrand disease. His ambulatory clinics are based at the Dana-Farber Cancer Institute and Brigham and Women's Faulkner Hospital. He created the Women's Thrombosis and Hemostasis Clinic in the Fish Center for Women's Health and he attends on the inpatient service at Brigham and Women's Hospital. His research focuses on cost-effective strategies for the diagnosis and treatment of hematologic conditions. In addition to experience in clinical practice guideline development and systems-resource utilization, he is a founder of the field of systems-based hematology, which aims to optimize the ways in which health systems deliver care to individuals with blood disorders.



JUAN JAIME DE ZENGOTITA, M.D.

Instructor in Medicine, Harvard Medical School
Division of General and Internal Medicine and Primary Care
Southern Jamaica Plain Health Center / Adult Medicine
Email: jdezengotita@bwh.harvard.edu

Medical School: Harvard Medical School

Residency: Internal Medicine, Naval Medical Center

Dr. De Zengotita is a general internist at the Southern Jamaica Plain Health Center, where he is also the medical director, and works with a diverse population with a large percentage of Latinx patients. Additionally, Dr. De Zengotita works at the Primary Care Center of Excellence as a regional medical director. Dr. De Zengotita's interests are community medicine, primary care redesign, and health care equity. He has worked on LGBTQ issues, as well as the impact of race and racism on health, which is an area of focus of the work at the Health Center.



ALEJANDRO DIAZ, M.D.

Assistant Professor of Medicine, Harvard Medical School
Division of Pulmonary and Critical Care Medicine
Email: adiaz66@bwh.harvard.edu

Medical School: Universidad Nacional de La Plata (La Plata National University), La Plata, Argentina

Graduate School: University of Massachusetts, Amherst

Residency: Internal Medicine, Hospital de Clinicas Jose de San Martin (Jose de San Martin Hospital), Buenos Aires, Argentina

Fellowships: Pulmonary Diseases, Pontificia Universidad Catolica de Chile, Santiago, Chile; Pulmonary and Critical Care Medicine, Brigham and Women's Hospital

Dr. Diaz is a physician-scientist focused on lung imaging, particularly COPD and bronchiectasis. He has expanded his research efforts to study the respiratory health of Hispanics/Latinos. Dr. Diaz also spends time teaching Medical Spanish at Harvard Medical School.



MIGUEL DIVO, M.D.

Instructor in Medicine, Harvard Medical School
Division of Pulmonary and Critical Care Medicine
Email: mdivo@bwh.harvard.edu

Medical School: Universidad Central de Venezuela, Caracas, Venezuela

Residency: Internal Medicine, Mount Sinai Beth Israel, NY

Fellowships: Pulmonary and Critical Care Medicine, Caritas St. Elizabeth's Medical Center; Sleep Medicine, Caritas St. Elizabeth's Medical Center

Dr. Divo is a physician at Brigham and Women's Hospital and an Instructor in Medicine at Harvard Medical School. He received his medical degree from the Central University of Venezuela (Caracas, Venezuela). He then completed a residency program in Internal Medicine at Mount Sinai Beth Israel (formerly known as Beth Israel Medical Center). He also completed fellowships in pulmonary and critical care medicine and sleep medicine at St. Elizabeth's Medical Center. He is board certified in critical care medicine, internal medicine, and pulmonary disease. Dr. Divo's clinical interests include chronic obstructive pulmonary disease and lung transplantation. He has authored more than 20 peer-reviewed publications and has received funding from the National Institutes of Health. He is also the recipient of the *Best Publication Maurizio Vignola Award for Innovation in Pneumology* from the European Respiratory Society and the BWH Minority Faculty Career Development Award.



LUC DJOUSSE, M.D., M.P.H., SC.D.

Associate Professor of Medicine, Harvard Medical School
Division of Aging
Email: ldjousse@partners.org

Medical School: Saarland University, Saarland, Germany
Graduate School: Boston University
Residencies: Internal Medicine, University Hospital, Homburg, Germany;
Preventive Medicine, Carney Hospital
Fellowship: Preventive Cardiology, Framingham Heart Study

Dr. Djousse is a cardiovascular and genetic epidemiologist with strong record of intra and extramural funding and excellent track record in scholastic activities and teaching. His primary interest is to understand the role of dietary factors and patterns on the risk of CVD in humans, and his secondary interest is to understand the role of modifiable lifestyle factors (diet, exercise, smoking, adiposity) along with their interaction with genetic factors on the risk of CVD. Dr. Djousse's contribution to preventive cardiology has focused on modifiable lifestyle factors resulting in important publications in major CVD and nutrition journals. Dr. Djousse remains strongly committed to mentoring medical students, junior faculty, staff, and preventive cardiology fellows.



JOSE FIGUEROA, M.D., M.P.H.

Assistant Professor of Medicine, Harvard Medical School
Division of General Internal Medicine and Primary Care
Email: jffigueroa@bwh.harvard.edu

Medical School: Harvard Medical School
Graduate School: Harvard T.H. Chan School of Public Health
Residency: Internal Medicine, Brigham and Women's Hospital

Dr. Figueroa is an Assistant Professor of Medicine at Harvard Medical School, Assistant Professor of Health Policy and Management at the Harvard T.H. Chan School of Public Health, and an Associate Physician at Brigham and Women's Hospital, where he now works as a Hospitalist and the Director of the BWH Internal Medicine Residency Management and Leadership Pathway. He was recently the 2017-2018 Burke Global Health Fellow at the Harvard Global Health Institute. His research focuses on evaluating the needs of high-cost, complex, and vulnerable populations, including racial and ethnic minorities, the frail elderly, and people with serious mental illness. His work also focuses on evaluating the effect of national health policies on health outcomes and costs, with a specific interest in how they affect institutions that disproportionately care for vulnerable populations.



AMANDA GARZA, PH.D.

Instructor in Medicine, Harvard Medical School
Division of Endocrinology, Diabetes, and Hypertension
Email: aegarza@bwh.harvard.edu

Graduate School: Medical College of Virginia/Virginia Commonwealth University

Fellowship: Endocrinology, Hormonal Mechanisms of Cardiovascular Disease, Harvard Medical School and Brigham and Women's Hospital

Dr. Garza is a biomedical research scientist and the Associate Director of the BWH Metabolic Core in the Division of Endocrinology, Diabetes, and Hypertension. Her previous research has focused on identifying and understanding the genes that regulate hormonal mechanisms of cardiometabolic diseases. She is currently studying the role of the immune system in the regulation of metabolism and adipose biology.



ESTEBAN GERSHANIK, M.D., M.P.H.

Instructor in Medicine, Part-time, Harvard Medical School
Division of General Internal Medicine and Primary Care
Email: egershanik@bwh.harvard.edu

Medical School: Tulane University School of Medicine

Graduate School: Tulane University School of Public Health

Residency: Internal Medicine – Pediatrics, Tulane University School of Medicine

Fellowship: Biomedical Informatics Research Training, Harvard Medical School

Dr. Gershanik is a physician in Internal Medicine and Pediatrics with a background in health systems management, public health, and informatics. He recently served as CIO, Health Informatics Director, and Regional Medical Consultant for the Louisiana Department of Health advancing and leading multiple Medicaid and public health initiatives around policy, data, and health information technology. Previously, he was Medical Director for the Hospital Medicine Unit at Brigham and Women's Hospital, a Partners eCare Process Care and Redesign Clinician, and a core member of the AHRQ-funded Patient Safety Learning Lab developing and enhancing patient-centered and provider tools to enhance patient safety and quality care. Dr. Gershanik is passionate about partnering with patients, providers, systems, and public/private communities in turning healthcare challenges into opportunities for innovation in improving care delivery.



RENATA GROZOVSKY, PH.D.

Instructor in Medicine, Harvard Medical School
Division of Hematology
Email: rgrozovsky@bwh.harvard.edu

Graduate School: Federal University of Rio de Janeiro
Fellowships: Endocrinology, Harvard Medical School and Brigham and Women's Hospital; Translational Medicine, Harvard Medical School and Brigham and Women's Hospital

Dr. Grozovsky, after receiving her Ph.D. in Endocrinology from the Federal University of Rio de Janeiro (Brazil), joined the Division of Translational Medicine at BWH to investigate the role of glycans on platelet clearance and hemostasis. Her research unveiled the mechanism by which the hepatic Ashwell Morell Receptor (AMR) removes desialylated (sialic acid depleted), senile platelets and regulates TPO synthesis in the liver by recruiting JAK2 and STAT3 signaling. The identification of this feedback mechanism shed light into the longstanding mystery of steady-state TPO regulation. Building on this work, Dr. Gorzovsky's lab now studies how changes in glycosylation affect platelet homeostasis as it relates to function and survival.



KATHRYN HALL, PH.D., M.P.H.

Assistant Professor of Medicine, Harvard Medical School
Division of Preventive Medicine
Email: khall0@bwh.harvard.edu

Graduate School: Harvard University, Harvard T.H. Chan School of Public Health
Fellowships: Hematological Malignancies, Dana-Farber Cancer Institute; Integrative Medicine, Beth Israel Deaconess Medical Center

Dr. Kathryn Hall is Associate Molecular Biologist and Assistant Professor in the Division of Preventive Medicine at Brigham and Women's Hospital and Director of Placebo Genetics in the Program in Placebo Studies at Harvard Medical School (HMS). After receiving her Ph.D. in Microbiology and Molecular Genetics from Harvard University she spent 10 years in the biotech industry tackling problems in drug discovery and development. Dr. Hall returned to HMS in 2010, joining the Fellowship in Integrative Medicine at Beth Israel Deaconess Medical Center in 2012, and receiving a Master's in Public Health from Harvard T.H. Chan School of Public Health in 2014. Dr. Hall was the 2015 Harvard Catalyst Program for Faculty Development and Diversity Inclusion (PPFDD) faculty fellow and is the 2019 BWH Minority Faculty Career Development Awardee.

Dr. Hall's recent research has focused on catechol-O-methyltransferase (COMT), an enzyme that metabolizes catecholamines such as dopamine and epinephrine and that has pleiotropic effects in a broad set of diseases and treatments, including cardiovascular disease and cancer. Among her accomplishments is a landmark paper identifying COMT as one of the first genetic markers of placebo response, a publication in JCI Insight on the placebo genetic network or placebome. She was recently awarded a Radcliffe Exploratory Program grant which supported the groundbreaking Placebome in Clinical Trials and Medicine Conference in 2019.



FLORENCIA HALPERIN, M.D., M.M.SC.

Instructor in Medicine, Harvard Medical School
Division of Endocrinology, Diabetes, and Hypertension
Email: fhalperin@bwh.harvard.edu

Medical School: Harvard Medical School
Graduate School: Harvard Medical School
Residency: Internal Medicine, Brigham and Women's Hospital
Fellowship: Endocrinology, Brigham and Women's Hospital and Joslin Diabetes Center

Dr. Halperin was born in Buenos Aires, Argentina. She earned her undergraduate degree and attended medical school at Harvard University. She completed residency in Internal Medicine and fellowship in Endocrinology at Brigham and Women's Hospital. Dr. Halperin currently serves as Medical Director of the Brigham and Women's Hospital Program for Weight Management. Her clinical research is focused on the delivery of weight loss interventions.



MICHELLE HOLMES, M.D., DR.P.H.

Associate Professor of Medicine, Harvard Medical School
Channing Division of Network Medicine
Email: michelle.holmes@channing.harvard.edu

Medical School: Harvard Medical School
Graduate School: Harvard T.H. Chan School of Public Health
Residency: Internal Medicine, Residency Program in Social Medicine, Montefiore Hospital
Fellowship: General Internal Medicine, Harvard Faculty Development and Fellowship Program, Harvard Medical School

Dr. Holmes is an Associate Professor of Medicine at Harvard Medical School and an Associate Professor in the department of Epidemiology at the Harvard T.H. Chan School of Public Health. Her research interests include lifestyle factors (diet, weight change, physical activity, and psychosocial factors, common medications) affecting quality of life and survival after a breast cancer diagnosis, as well as the association between diet and breast cancer risk. Other research interests include diet and lifestyle influences on endogenous levels of steroid hormones and insulin-like growth factors, and ethnic differences in obesity and other lifestyle factors affecting chronic disease risk. She has worked with the Nurses' Health Study since 1997.



TAMARRA JAMES-TODD, PH.D., M.P.H.

Instructor in Medicine, Harvard Medical School
Division of Women's Health
Email: tjames-todd@bwh.harvard.edu

Graduate School: Columbia University, Boston University
Fellowships: Cancer Epidemiology, Harvard T.H. Chan School of Public Health; Diabetes Epidemiology and Women's Health, Brigham and Women's Hospital

Dr. James-Todd is an epidemiologist with expertise in environmental chemical exposures and cardiometabolic outcomes in women, her research focuses on the reproductive and environmental predictors of diabetes in women during and after pregnancy. Specifically, she evaluates four main research questions: 1) how environmental endocrine disrupting chemicals, including phthalates, can affect glucose regulation during and after pregnancy; 2) how pregnancy impacts the short and long-term health of women with preexisting diabetes and; 3) how postpartum lifestyle interventions can help reduce future risk of type 2 diabetes among women with a history of gestational diabetes (GDM). Dr. James-Todd is a Principal Investigator of the NIEHS R01- funded ERGO study, where she recruits women from the Lifecodes pregnancy cohort at Brigham and Women's Hospital into the Environmental Reproductive Glucose Outcomes (ERGO) Study to evaluate many of these questions. She also utilizes data from large cohort studies, such as the Nurses' Health Study II, Project Viva, the Black Women's Health Study, and the Lifecodes pregnancy cohort. A common theme in her research is to reduce health disparities by 1) identifying modifiable environmental factors and 2) designing culturally-sensitive and -relevant interventions.



HOUMAN JAVEDAN, MB, CHB

Assistant Professor of Medicine, Harvard Medical School
Division of Aging
Email: hjavedan@bwh.harvard.edu

Medical School: The University of Edingburg, College of Medicine and Veterinary Medicine
Residency: Internal Medicine, Mount Auburn Hospital
Fellowship: Clinical Fellowship, Geriatrics, Beth Israel Deaconess Medical Center

Dr. Javedan is a Geriatrician and Assistant Professor of Medicine at Harvard Medical School, and is the Clinical Director of Geriatrics in the Division of Aging at Brigham and Women's Hospital (BWH). He is the co-founder of the Geriatric Inpatient Fracture Trauma Service (GIFTS), a Geriatrics-Orthopedics co-management service. He is also integral in developing other Geriatric co-management services at Brigham and Women's Hospital in collaboration with General Trauma, Thoracic Surgery, and elective Orthopedic and Spine surgeries. He is now working with the newly established Superior Surgical Treatment for Elders Program (SSTEP) to carry geriatric surgical excellence forward. Dr. Javedan and his colleagues are also involved in establishing co-management programs in Primary Care, inpatient Internal Medicine, and Oncology at Brigham and Women's Hospital. Dr. Javedan is the Associate Program Director of the Harvard Medical School Geriatric Fellowship Program and teaches Geriatric Clinical Reasoning, a curriculum he developed as a Macy Scholar. His clinical and research focus is the geriatric surgical patient.



MONIK JIMENEZ, SC.D.

Assistant Professor of Medicine, Harvard Medical School
Division of Women's Health
Email: mjimenez@bwh.harvard.edu

Graduate School: Harvard T.H. Chan School of Public Health
Fellowship: Cardiovascular Epidemiology, Brigham and Women's Hospital

Dr. Jiménez is an epidemiologist and Assistant Professor of Medicine. Her current NIH-funded research is focused on understanding the intersection of sex, race/ethnicity and socioeconomic factors in stroke inequities. Additionally, as a 2019 H. Richard Nesson Fellow, she has been funded to examine factors that impact the cardiovascular health of patients who have experienced incarceration, identify ways to support respectful patient-clinician communication about such experiences and inform future policy to support health care equity.



DANIELA LAMAS, M.D.

Instructor in Medicine, Harvard Medical School
Division of Pulmonary and Critical Care Medicine
Email: dlamas@bwh.harvard.edu

Medical School: Columbia University College of Physicians and Surgeons
Residency: Internal Medicine, New York Presbyterian Hospital
Fellowship: Clinical/Research Fellow, Pulmonary and Critical Care Medicine, Harvard Combined Pulmonary and Critical Care Medicine Training Program, Beth Israel Medical Center, Brigham and Women's Hospital

Dr. Lamas is a pulmonary and critical care doctor at the Brigham and Women's Hospital and faculty at Harvard Medical School. Following graduation from Harvard College, she went on to earn her MD at Columbia University College of Physicians & Surgeons, where she also completed internship and residency. She then returned to Boston for her subspecialty fellowship. She has worked as a medical reporter at the Miami Herald and is frequently published in the New York Times. She is a well published narrative medicine writer and the author of the book *You Can Stop Humming Now*.



CHRISTOPHER LATHAN, M.D., M.P.H.

Assistant Professor of Medicine, Harvard Medical School
Division of Medical Oncology
Email: Christopher_lathan@dfci.harvard.edu

Medical School: Tufts University School of Medicine
Graduate School: University of Massachusetts, Harvard T.H. Chan School of Public Health
Residency: Boston Medical Center
Fellowships: Clinical, Medical Oncology, Dana-Farber / Partners CancerCare, Research, Program for Cancer Outcomes Research Training, Dana-Farber/Harvard Cancer Center

Dr. Lathan's desire is to lessen the disconnect between research efforts in disparities and the realities of patient care. He is interested in changing the outcomes of vulnerable patients (patients of color, and/or low socioeconomic) at a local and national level via increasing access and information to high quality cancer care. The elucidation of the role of race and class in obtaining appropriate cancer care requires not only research skills, but also a willingness to propose clinical and policy interventions that will eventually equalize the treatment playing field in cancer.

Dr. Lathan's background and training converge to propel him forward to find a way to improve cancer outcomes for all patients and lessen the effects of race and class on treatment quality.



FERNET LÉANDRE, M.D., M.M.S.C. - GHD

Instructor in Medicine, Harvard Medical School
Division of Global Health Equity
Email: fleandre@pih.org

Medical School: Universidad d'Etat-Faculte de Medecine et de Pharmacie, Port-au-Prince, Haiti
Graduate School: Harvard Medical School, Master of Medical Sciences for Global Health Delivery
Fellowship: Globaly Health Delivery, Partners in Health

Dr. Léandre is a physician and HIV and TB specialist who currently serves as the Chief Programs Officer of Zanmi Lasante (ZL), Partners In Health (PIH)'s sister organization in Haiti. Dr. Léandre was active in the Caribbean-wide CHART/CDC/GAP/I-TECH HIV training initiative for health care workers, and he serves as a medical and technical consultant to Partners In Health's AIDS treatment project in rural Rwanda, Malawi, and Lesotho. Dr. Léandre also served as a lecturer and now as an Instructor in Medicine in the Department of Medicine at Harvard Medical School. Dr. Léandre was awarded a prestigious Smith Scholarship in 2010 through the Division of Global Health Equity at the Brigham and Women's Hospital. He has done coursework in summer 2010 and 2011 at Harvard School of Public Health and in May 2014 he obtained his Master of Medical Sciences for Global Health Delivery (MMSc-GHD) at Harvard Medical School.



DARIO LEMOS, PH.D.

Assistant Professor of Medicine, Harvard Medical School
Division of Renal Medicine
Email: dlemos@bwh.harvard.edu

Graduate School: University of Buenos Aires, Buenos Aires, Argentina
Fellowship: Regenerative Medicine, University of British Columbia, Canada

Dr. Lemos' principal effort at BWH and HMS is in tissue regeneration, with a focus on tissue bioengineering. Currently, the research in his lab at BWH is focused on the development of bioengineering tools based on the use of human pluripotent stem cells for kidney repair and disease modeling. Our two lines of research focus on the development of bioengineering therapies for acutely injured kidney; and the use of kidney organoids to model renal tuberous sclerosis. This work is being done in the Renal Division of BWH, in collaboration with other research groups at HMS, including the Department of Biomedical Informatics, and the McGovern Institute at MIT. This work is funded by an NIH/NIA R21 grant and a sponsored research agreement with Astellas Pharmaceuticals.

Mentoring is an important component of Dr. Lemos' academic work. He has trained, supervised, and co-mentored both undergraduate and graduate students, and managed research teams both in academia and in industry. Dr. Lemos enjoys mentoring and helping trainees achieve their own personal goals.



JOSE LEONE, M.D.

Assistant Professor of Medicine, Harvard Medical School
Division of Medical Oncology
Email: JoseP_Leone@dfci.harvard.edu

Medical School: Facultad de Medicina, Universidad del Salvador, Buenos Aires, Argentina
Residency: Internal Medicine, Jackson Memorial Hospital, Miami, Florida
Fellowship: Hematology and Oncology, University of Pittsburgh Medical Center

Dr. Leone is a medical oncologist who specializes in breast cancer. He sees patients at Dana-Farber Cancer Institute in the outpatient setting, where he also teaches trainees of different levels. He rotates on the inpatient oncology service at Brigham and Women's Hospital. His research interests include brain metastases from breast cancer, male breast cancer and novel therapies for the treatment of breast cancer. He also devotes a significant amount of his time to clinical research through clinical trials in breast cancer.



ELDRIN LEWIS, M.D., M.P.H.

Associate Professor of Medicine, Harvard Medical School
Division of Cardiovascular Medicine
Email: eflewis@partners.org

Medical School: Perelman School of Medicine at the University of Pennsylvania

Graduate School: Harvard T.H. Chan School of Public

Residency: Internal Medicine, Brigham and Women's Hospital

Fellowship: Cardiovascular Disease, Brigham and Women's Hospital

Dr. Lewis is the Director of the Cardiovascular Clerkship Program at Brigham and Women's Hospital. A cardiovascular medicine and heart transplantation specialist, he is also an Associate Professor of Medicine at Harvard Medical School.

Dr. Lewis received his medical degree at the University of Pennsylvania School of Medicine (now Perelman School of Medicine at the University of Pennsylvania). He completed a residency in internal medicine and a fellowship in cardiovascular disease at BWH. Dr. Lewis is board certified in internal medicine and cardiovascular disease.

His clinical interests include congestive heart failure, heart transplant, quality of life and clinical trials. The author of over 100 peer-reviewed publications, Dr. Lewis's research focuses on improving the clinical usefulness of quality of life (QOL) assessments, as well as preventing the progression of cardiovascular disease to preserve overall quality of life for cardiovascular patients. His research has received support from the National Heart, Lung and Blood Institute and National Institutes of Health.



MARGEE LOUISIAS, M.D., M.P.H.

Instructor in Medicine, Harvard Medical School
Division of Allergy and Clinical Immunology
Email: mlouisias@partners.org

Medical School: Stony Brook University School of Medicine

Graduate School: Harvard T.H. Chan School of Public Health

Residency: Internal Medicine-Pediatrics, The Mount Sinai Hospital

Fellowship: Allergy-Immunology, Brigham and Women's Hospital

Dr. Louisias is an Allergist-Immunologist (children & adults) and a health-services researcher in community-based interventions to reduce racial disparities in pediatric asthma at Brigham and Women's Hospital and Boston Children's Hospital. Dr. Louisias received her undergraduate degree in chemistry from New York University and doctor of medicine degree from Stony Brook University School of Medicine. She completed her MPH at the Harvard T.H. Chan School of Public Health. She is a board-certified Internist, Pediatrician, and Allergist-Immunologist. Her other interests include community engagement, translation of research into policy, and the role of racism in health outcomes.



FRANCISCO MARTY, M.D., M.Sc.

Associate Professor of Medicine, Harvard Medical School
Division of Infectious Diseases
Email: fmarty@partners.org

Medical School: Jose Maria Vargas School of Medicine, Universidad Central de Venezuela, Caracas, Venezuela

Graduate School: Harvard T.H. Chan School of Public Health

Residency: Internal Medicine, Albert Einstein College of Medicine

Fellowships: Infectious Diseases, Brigham and Women's Hospital and Massachusetts General Hospital; Transplant Infectious Diseases, Brigham and Women's Hospital and Dana-Farber Cancer Institute

Dr. Marty is Associate Professor of Medicine at Harvard Medical School and attending physician at Brigham and Women's Hospital and Dana-Farber Cancer Institute in Transplant and Oncology Infectious Diseases. Dr. Marty's research interests include the clinical epidemiology of infectious diseases in diverse transplant and cancer populations, the development and validation of novel infectious disease diagnostics in immunocompromised hosts, and the conduct of clinical trials for investigational anti-infectives of relevance to these populations. He is editor-in-chief of the Transplant Infectious Disease journal.



NADINE MCCLEARY, M.D.

Assistant Professor of Medicine, Harvard Medical School
Division of Medical Oncology
Email: NJ_McCleary@dfci.harvard.edu

Medical School: Johns Hopkins University School of Medicine

Graduate School: Johns Hopkins University, Bloomberg School of Public Health

Residency: Internal Medicine, Johns Hopkins Hospital

Fellowship: Hematology and Oncology, Dana-Farber/Partners Cancer Care

Dr. McCleary is a clinical innovator in oncology. Since completing a Bachelor's of Science in Nursing at University of Pennsylvania (1998), MD/MPH at Johns Hopkins School of Medicine and Bloomberg School of Public Health (2003), fellowship in hematology and oncology at Dana-Farber/Harvard Cancer Care and joining the Gastrointestinal Cancer Center faculty at Dana-Farber Cancer Institute (DFCI) in 2009. Her overarching career objective is related to the development and application of clinical informatics to cancer care delivery and shared decision-making between providers and patients. Her specific research objective is to refine implementation strategies for clinical informatics applications at the point of care and demonstrate improvement in cancer care delivery. Clinically, she is Senior Physician at DFCI, Medical Oncologist in the DFCI Gastrointestinal Cancer Center, Gastrointestinal Cancer liaison in the DFCI Cancer Care Collaborative, and Assistant Professor of Medicine at Harvard Medical School.



EDGAR MILFORD, M.D.

Associate Professor of Medicine, Harvard Medical School
Division of Renal Medicine
Email: emilford@partners.org

Medical School: Harvard Medical School
Residency: Internal Medicine, Columbia College of Physicians and Surgeons
Fellowships: Nephrology, Columbia College of Physicians and Surgeons, Harlem Hospital Center, Nephrology, Brigham and Women's Hospital

Dr. Milford has devoted his professional career to the field of applied immunogenetics and transplantation with an emphasis on solid organ transplantation and hematologic stem cell transplantation. His interest has been to foster the implementation of evidence-based policies in organ transplantation and stem cell transplantation that will result in optimum care for individual patients as well as efficient use of available resources. As a clinical transplant nephrologist, he continues to devote 20% of his time to the direct care of patients with chronic kidney disease, dialysis and transplants. 60% of his effort is spent directing the Brigham and Women's Hospital Tissue Typing Laboratory, the reference laboratory which does pre-transplant immunogenetic testing for 14 solid organ transplant centers in the six New England States as well as post-transplant immunological monitoring.



VIVIAN GONZALEZ MITCHELL, M.D.

Instructor in Medicine, Harvard Medical School
Division of General Internal Medicine and Primary Care
Email: vgmitchell@partners.org

Medical School: Harvard Medical School
Residency: Internal Medicine, Brigham and Women's Hospital

Dr. Mitchell joined the BWH Hospitalist Service in 2006 with an interest in pursuing inpatient medicine and develop a niche in medical education. While on service, she performed bedside walk rounds with residents and students and oversaw their clinical activities. Her formal involvement with Harvard Medical School students began in 2008 when she taught a curriculum for BWH Core Medicine II Clerkship, leading weekly interactive sessions based on clinical on-call emergency scenarios. Dr. Mitchell also served as PCE faculty advisor, following 8 students annually throughout the course of their first year of clinical experience. On July 2009, she became the Associate Clerkship Director for the PCE Medicine Core I Clerkship and supervised the HMS students during their inpatient rotation at the Faulkner Hospital. In 2013, she transitioned to primary care medicine and joined Brigham Circle Medical Associates (BCMA) which allowed her to balance inpatient and outpatient medicine. She continued her involvement with the clerkship at the Faulkner until July 2017, when she transitioned to the new role of Medical Director at BCMA. Dr. Mitchell is actively involved in primary care redesign at BCMA and collaborating with BWH Primary Care Leadership in this endeavor.



MONTY MONTANO, PH.D.

Assistant Professor of Medicine, Harvard Medical School
Division of Endocrinology, Diabetes, and Hypertension
Email: mamontano@research.bwh.harvard.edu

Graduate School: Stanford University School of Medicine
Fellowship: Molecular Epidemiology, Harvard T.H. Chan School of Public Health

Dr. Montano is an Assistant Professor of Medicine at Harvard Medical School and is the Scientific Director of the Boston Pepper Center at Brigham and Women's Hospital. Dr. Montano received a Ph.D. in Genetics from Stanford University School of Medicine and did his postdoctoral work at the Harvard School of Public Health. He conducts research on HIV and aging. Dr. Montano is the principal investigator of an NIH R01 & R21 focused on physical function and biomarkers of aging. Dr. Montano is the author of a book on translational medicine entitled, "Translational Biology in Medicine: Models from Aging, Muscle Regeneration and Infection."



MICHELLE MORSE, M.D., M.P.H

Assistant Professor of Medicine, Part-Time, Harvard Medical School
Division of Global Health Equity
Email: memorse@partners.org

Medical School: University of Pennsylvania School of Medicine
Graduate School: Harvard T.H. Chan School of Public Health
Residency: Internal Medicine, Brigham and Women's Hospital

Dr. Morse works to rethink and advance medical education globally, expand the teaching of social medicine in the US and abroad, and to support health systems strengthening through equitable approaches to human resources for health. She is an internal medicine hospitalist, Founding Co-Director of EqualHealth, and social medicine course director at Harvard Medical School. Previously, she served for three years as deputy chief medical officer at Partners In Health (PIH) and as Assistant Program Director for the Internal Medicine Residency at Brigham and Women's Hospital, and now serves on the Board of Directors of PIH. She was awarded the 40 under 40 Leaders In Health Award by the National Minority Quality Forum in 2018. The Society of Hospital Medicine awarded her the Excellence in Humanitarian Services award in 2018. In 2019 she was the first black woman to receive the George W. Thorn Award, which was established in 1975 and is the highest clinical education honor awarded by the BWH Department of Medicine. In 2018, Dr. Morse was awarded a Soros Equality Fellowship to work on the SMC's global Campaign Against Racism. In September 2019 she began a year-long Robert Wood Johnson Health Policy fellowship in Washington, DC.



MUTHOKA MUTINGA, M.D.

Assistant Professor of Medicine, Harvard Medical School
Division of Gastroenterology, Hepatology, and Endoscopy
Email: mmutinga@partners.org

Medical School: University of Alabama School of Medicine
Residency: Internal Medicine, Brigham and Women's Hospital
Fellowship: Gastroenterology, Brigham and Women's Hospital

Dr. Muthoka Mutinga is a general gastroenterologist. His practice is at Brigham and Women's Faulkner Hospital, where he has been in practice since 2001. He is actively involved in training GI Fellows and is an Endoscopy preceptor. He also serves as Medical Director of the Outpatient Infusion Center at BWFH.



OREOFE ODEJIDE, M.D., M.P.H.

Assistant Professor of Medicine, Harvard Medical School
Division of Medical Oncology
Email: oreofe_odejide@dfci.harvard.edu

Medical School: Howard University
Graduate School: Harvard T.H. Chan School of Public Health
Residency: Internal Medicine, Brigham and Women's Hospital
Fellowships: Clinical Fellow, Hematology and Oncology, Dana-Farber Cancer Institute; Research Fellow, Hematology and Oncology, Dana-Farber Cancer Institute

Dr. Odejide is a hematologic oncologist. She sees patients in the Center for Lymphoma at Dana-Farber Cancer Institute (DFCI) and attends on the inpatient hematologic malignancy services. She also conducts health services/outcomes research within the Division of Population Sciences at DFCI. Her research focuses on characterizing factors that impact quality of care for patients with hematologic malignancies throughout the disease continuum, with the ultimate goal of developing effective interventions to improve care.



BISOLA OJIKUTU, M.D., M.P.H.

Assistant Professor of Medicine, Harvard Medical School
Division of Global Health Equity
Email: bojikutu@partners.org

Medical School: John Hopkins University School of Medicine
Graduate School: Harvard T.H. Chan School of Public Health
Residency: Internal Medicine, New York Presbyterian Hospital, Weill Cornell Medical School
Fellowships: Infectious Disease, Massachusetts General Hospital / Brigham and Women's Hospital; Commonwealth Fund/Mongan Fellowship at Harvard University

Dr. Ojikutu is an infectious disease specialist who has dedicated her career to addressing health inequities experienced by people living with or at risk for HIV both domestically and internationally. Her recent research explores the impact of structural factors and social determinants of health on HIV transmission and the use of biomedical HIV prevention. Much of her work has focused on collaborative engagement of marginalized communities in the research process. To that end, she is the Director of the Community Engaged Research Program within the Harvard Center for AIDS Research and the Associate Director of the Bio-Behavioral and Community Science Core.



NORA OSMAN, M.D.

Assistant Professor of Medicine, Harvard Medical School
Division of General Internal Medicine and Primary Care
Email: nosman@bwh.harvard.edu

Medical School: University of California, San Francisco, School of Medicine
Residency: Internal Medicine, Brigham and Women's Hospital

Dr. Osman is a primary care physician in the Division of General Medicine at the Brigham and Women's Hospital. Dr. Osman is the Director of Student Medical Education in the Department of Medicine at BWH. Her interests are in urban primary care medicine, medical student education, and the development of programs to support and promote diversity and inclusion among students, trainees and faculty in health services locally and nationally. Her education research uses textual analysis and linguistics to tackle a variety of questions including how students learn to think and communicate like doctors, the role gender plays in professional identity, and obstacles to learning on the wards.



LISA OWENS, M.D.

Instructor in Medicine, Harvard Medical School
Division of General Internal Medicine and Primary Care
Email: lowens@bwh.harvard.edu

Medical School: University of North Carolina at Chapel Hill School of Medicine

Residency: Internal Medicine, Brigham and Women's Hospital

Dr. Owens finds it very rewarding to contribute to high quality care as well as the educational mission at Brigham and Women's Hospital after completing her residency here in Internal Medicine. Since joining the professional staff, her focus has been on various aspects of clinical care and medical education.

Dr. Owen's clinical responsibilities as a board-certified internal medicine physician involve providing continuous care over time for a panel of patients. She takes care of patients from age 18 well into the ninth decade of life. This spectrum of care includes diagnostic evaluation of new medical problems, preventive care services, chronic disease management, acute care for urgent medical issues, and the coordination of care with specialists in medicine, surgery, and radiology. She is currently the Medical Director Brigham & Women's Primary Physicians at Faulkner Hospital.



DANIEL PALAZUELOS, M.D., M.P.H.

Assistant Professor of Medicine, Harvard Medical School
Division of Global Health Equity
Email: dpalazuelos@partners.org

Medical School: Warren Alpert Medical School of Brown University

Graduate School: Harvard T.H. Chan School of Public Health

Residency: Global Health Equity and Internal Medicine, Brigham and Women's Hospital

Fellowship: Clinical Fellow, Medicine, Harvard Medical School

Dr. Palazuelos is a hospitalist and global health educator / implementer. He sees patients at the Brigham and Women's and Faulkner Hospitals, where he also precepts residents. His research and scholarly writing focuses on global health equity, global health career development, and community health. He is also the Director of Community Health Systems at Partners In Health, the Assistant Director of the Hiatt Global Health Equity (GHE) residency, and the Essentials of the Profession: Social Medicine course co-director at Harvard Medical School. He studied at Brown University for both undergraduate and medical school, was a GHE resident at BWH, and received an MPH from the Harvard T.H. Chan School of Public Health.



JUAN CARL PALLAIS, M.D., M.P.H.

Assistant Professor of Medicine, Harvard Medical School
Division of Endocrinology, Diabetes, and Hypertension
Email: jpallais@partners.org

Medical School: John Hopkins University School of Medicine
Graduate School: Harvard T.H. Chan School of Public Health
Residency: Internal Medicine, Massachusetts General Hospital;
Chief Resident, Internal Medicine, Massachusetts General Hospital
Fellowship: Clinical and Research Fellow, Endocrinology, Massachusetts
General Hospital

Dr. Pallais emigrated from Nicaragua in 1980 and did his medical training at the Johns Hopkins School of Medicine in Baltimore. During medical school, he earned an MPH at the Harvard School of Public Health and was selected as a Howard Hughes Research Fellow at Brigham and Women's Hospital (BWH). He then completed his residency, Chief Residency, and endocrine fellowship at the Massachusetts General Hospital (MGH). Throughout his career, he has participated in basic, translational, and clinical research and has fostered a passion for medical education. He now serves as Associate Director for the BWH Internal Medicine Residency Program, the Master Clinician in the Division of Endocrinology, and Director of the Endocrine Genetics Clinic. He is an executive member of the Harvard Undiagnosed Diseases Network that utilizes advanced technologies and genomic tools to understand complex disorders that have avoided diagnoses. He has earned numerous teaching awards including the Senior Resident Teaching Award, the Alfred Krane Excellence in Teaching Award, the Gilbert Daniels and the Gail Backus Endocrinology Faculty Clinical Teaching Award for teaching students, residents, and endocrine fellows at MGH and BWH.



KIMBERLY PEREZ, M.D.

Assistant Professor of Medicine, Harvard Medical School
Division of Medical Oncology
Email: Kimberly_perez@dfci.harvard.edu

Medical School: George Washington University School of Medicine
Residency: Internal Medicine, Rhode Island Hospital and Miriam
Hospital, Warren Alpert Medical School of Brown University
Fellowship: Hematology and Oncology, Rhode Island Hospital and
Miriam Hospital, Warren Alpert Medical School of Brown University

Dr. Perez is a member of the DF/HCC Gastrointestinal Oncology and Cancer Genetics and Prevention disease centers. She received her undergraduate training at Georgetown University in Washington DC, and received her MD from George Washington University in Washington DC. She completed her residency and fellowship training at Rhode Island Hospital in 2010. After completing her fellowship, she joined the medical faculty at Warren Alpert School of Medicine at Brown University and served as a Gastrointestinal Oncologist at the Comprehensive Cancer Center at Rhode Island Hospital. She joined the faculty at Dana-Farber Cancer Institute in 2015 and is currently an Assistant Professor of Medicine at Harvard Medical School and Dana-Farber Cancer Institute.



JORGE PLUTZKY, M.D.

Associate Professor of Medicine, Harvard Medical School
Division of Cardiovascular Medicine
Email: jplutzky@bwh.harvard.edu

Medical School: University of North Carolina at Chapel Hill School of Medicine

Residency: Internal Medicine, Brigham and Women's Hospital;
Chief Medical Resident, Internal Medicine, West Roxbury Veterans'
Administration Hospital

Fellowships: Research Fellow, Massachusetts Institute of Technology;
Clinical Fellow, Cardiology, Brigham and Women's Hospital

Dr. Plutzky directs the BWH's Preventive Cardiology Section and is involved with the Cardiovascular Innovation group exploring new approaches to remote, algorithmic management of cardiovascular issues. In addition to translational clinical research regarding the intersection between obesity, diabetes and heart disease, he directs a basic science laboratory investigating transcriptional regulation that governs similar cardio-metabolic issues.



ALBERTO RAMIREZ, M.D.

Assistant Professor of Medicine, Part-Time, Harvard Medical School
Division of Cardiovascular Medicine
Email: aramirez1@partners.org

Medical School: Universidad del Valle, Cali, Colombia, S.A.

Residency: Internal Medicine, Virginia Commonwealth University School
of Medicine; Internal Medicine, The Cambridge Hospital

Fellowships: Research and Clinical Fellow, Cardiovascular Diseases,
Harvard Medical School, Thorndike Memorial Laboratory, and
Boston City Hospital

Dr. Ramirez is a cardiovascular medicine specialist at Brigham and Women's Hospital and an Assistant Professor of Medicine, Part-Time at Harvard Medical School. Dr. Ramirez is the director of clinical cardiology at Brigham and Women's Faulkner Hospital.

Dr. Ramirez received his medical degree from Universidad del Valle in Cali, Colombia. He completed a residency in internal medicine at Medical College of Virginia (now Virginia Commonwealth University Medical Center) and a fellowship in cardiology at the Thorndike Memorial Laboratory as part of the Harvard Medical Unit (now Boston Medical Center). Dr. Ramirez is board certified in internal medicine and cardiovascular disease.

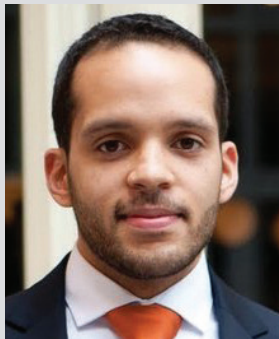
As chief of cardiology at BWH Faulkner Hospital from 1974 through 2008, his primary goal has been educating and instructing medical students, residents and colleagues in internal and cardiovascular medicine. Under his leadership, a non-invasive cardiac laboratory with diagnostic exercise testing and cardiac rehabilitation unit was developed.

MONICA RAMIREZ CURTIS, M.D., M.P.H.

Instructor in Medicine, Part-Time, Harvard Medical School
Division of Rheumatology, Inflammation, and Immunity
Email: ramirez@bwh.harvard.edu

Medical School: Tufts University School of Medicine
Residency: Internal Medicine, Brigham and Women's Hospital
Fellowship: Rheumatology, Brigham and Women's Hospital

Dr. Ramirez Curtis is a physician in the Division of Rheumatology, Inflammation, and Immunity and an Instructor in Medicine, Part-Time at Harvard Medical School. She is also a Senior Deputy Editor at *UpToDate, Inc.*



JORGE RODRIGUEZ, M.D.

Instructor in Medicine, Harvard Medical School
Division of General Internal Medicine and Primary Care
Email: jarodriguez1@partners.org

Medical School: Tufts University School of Medicine
Residency: Internal Medicine, Massachusetts General Hospital
Fellowship: Clinical Informatics, Beth Israel Deaconess Medical Center

Dr. Rodriguez's research and passion lie in the meaningful intersection of medicine, social justice, and technology. He completed his Internal Medicine training at Massachusetts General Hospital. He went on to complete a Clinical Informatics fellowship at Beth Israel Deaconess Medical Center. Prior to his current position, he was Medical Director of Clinical Informatics at Lawrence General Hospital where he led an EHR Go-Live in a safety-net hospital. He is currently a hospitalist-investigator in the Division of General Internal Medicine where he focuses on bridging disparities in patient facing health technology, especially for limited English proficient patients.



JOSE ROMERO, PH.D.

Assistant Professor of Medicine, Harvard Medical School
Division of Endocrinology, Diabetes, and Hypertension
Email: jromero@partners.org

Graduate School: Boston University School of Medicine
Fellowship: Division of Endocrinology, Diabetes, and Hypertension,
Brigham and Women's Hospital, Harvard Medical School

Dr. Romero is a cell physiologist interested in the role of cellular cation metabolism as it impacts on cardiovascular diseases. His laboratory uses cellular techniques, whole animal physiology and genetic-epidemiology to investigate the mechanisms of disordered cation transporters in the pathophysiology of hypertension, diabetes and sickle cell disease. A significant part of his professional activities is also devoted to mentoring at the local, national, and international levels. Dr. Romero co-directs a Translational Research Summer Program for Medical Students interested in minority health research. In 2013, he received the A. Clifford Barger Excellence in Mentoring Award at Harvard Medical School (HMS) and was nominated to Chair the Oversight Committee of NIDDK - Network of Minority Health Research Investigators (NMRI) at NIH. In 2014 he received the Harold Amos Faculty Diversity Award, which honors Harvard faculty who have made significant achievements in mentoring and moving HMS toward a more diverse and inclusive community and was recently honored by the NIDDK/NIH with the NMRI-Medallion for his mentoring contributions. In addition, he was appointed member of The Academy at HMS, an institution established to advance excellence in education throughout the HMS community and was recently honored to be named member of The Council of Mentors at HMS that is comprised of distinguished faculty noted for their accomplishments and excellence in mentoring.

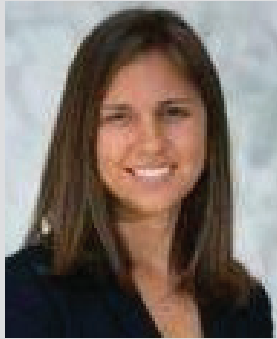


LILIANA ROSSELLI-RISAL, M.D.

Instructor in Medicine, Harvard Medical School
Division of General Internal Medicine and Primary Care
Email: lrossellirisal@partners.org

Medical School: Escuela Colombina de Medicina, Columbia South America
Residency: Internal Medicine, Carney Hospital

Dr. Roselli-Risal's clinical practice takes place at Southern Jamaica Plain Community Health Center, part of the Brigham and Women's Hospital. A great variety of patients from various ethnic backgrounds compose the community. She spends most of her time at the Health Center and visiting the patients that are admitted to the Hospital. Dr. Roselli-Risal's has been leading "Comunidad en Accion" Group since September, 2012. The group is directed to Spanish-speaking diabetic and prediabetic patients on managing their disease, learning more about nutrition, mental health and social aspects of diabetes care. Dr. Roselli-Risal is passionate about providing care for minorities and underserved patients.



AGUSTINA SAENZ, M.D., M.P.H.

Instructor in Medicine, Harvard Medical School
Division of General Internal Medicine and Primary Care
Email: asaenz@bwh.harvard.edu

Medical School: University of Buenos Aires School of Medicine, Buenos Aires, Argentina

Graduate School: Harvard T.H. Chan School of Public Health

Residency: Internal Medicine, Albert Einstein Medical Center

Dr. Saenz was born and raised in Argentina and relocated to the United States to finish medical school. She was immediately attracted by the challenges and opportunities available in the US and from there, decided to take the United States Medical Licensing Examination and apply for residency. Since completing her internal medicine residency at Albert Einstein Medical Center, Dr. Saenz has engaged in global health work and completed a MPH in health policy from the Harvard TH Chan School of Public Health, while also engaging in nutrition policy work in Washington, DC. Dr. Saenz has practiced hospital medicine at Brigham and Women's Hospital since 2017 and in addition to her clinical work, she has been involved in a variety of other projects including decreasing opioid orders in the inpatient service.



FIDENCIO SALDAÑA, M.D.

Assistant Professor of Medicine, Harvard Medical School
Division of Cardiovascular Medicine
Email: fsaldana@partners.org

Medical School: Harvard Medical School

Graduate School: Harvard T.H. Chan School of Public Health

Residency: Internal Medicine, Brigham and Women's Hospital;
Chief Resident, Medicine, Brigham and Women's Hospital

Fellowships: Research Fellow, Preventive Medicine, Brigham and Women's Hospital; Research and Clinical Fellow, Cardiovascular Medicine, Brigham and Women's Hospital

Dr. Saldaña received his bachelor's degree from Stanford University, his MD degree from Harvard Medical School and his MPH degree from the Harvard T.H. Chan School of Public Health. He completed his internal medicine residency, chief residency, and cardiology fellowship at the Brigham and Women's Hospital.

He is Dean for Students at Harvard Medical School and has been recognized with multiple honors for his work in teaching and advising. Dr. Saldaña is a Fellow of the American College of Physicians, American College of Cardiology and American Society of Echocardiography. His clinical interests include general cardiology, valvular disease, preventive cardiology, and cardiovascular care for minority populations.



THOMAS SEQUIST, M.D., M.P.H.

Professor of Medicine, Harvard Medical School
General and Internal Medicine
Email: tsequist@partners.org

Medical School: Harvard Medical School
Graduate School: Harvard T.H. Chan School of Public Health
Residency: Internal Medicine, Brigham and Women's Hospital
Fellowship: Clinical and Research, General Medicine, Brigham and Women's Hospital

Dr. Sequist is the Chief Quality and Safety Officer at Partners HealthCare, and is a primary care physician in the Phyllis Jen Center at Brigham and Women's Hospital. Dr. Sequist's research interests include ambulatory quality measurement and improvement, with a focus on patient and provider education, and the innovative use of health information technology. Dr. Sequist is particularly interested in health policy issues affecting care for Native Americans, and has worked collaboratively with the Indian Health Service to evaluate the provision of care for this population.

JUSTIN SIMMONS, M.D.

Instructor in Medicine, Harvard Medical School
Division of Medical Oncology
Email: justin_simmons@dfci.harvard.edu

Medical School: New York University School of Medicine
Residency: Internal Medicine, New York University School of Medicine
Fellowship: Hematology and Medical Oncology, Boston Medical Center

Dr. Simmons' principal objective at BWH, DFCC, and HMS is to maintain a standard of excellence of patient-centered high-quality cancer care. In addition to direct patient care and teaching, part of Dr. Simmons' intention to meet his principle objective will be to take part in optimizing hospital efficiencies in delivery of care as well as improving quality of care through quality improvement initiatives. He is a clinician educator active in direct patient care, optimizing cancer care and training of students, mid-levels, and residents. He currently serves as the interim director of both the inpatient physician assistant program and the medical oncology hospitalist program at DFCI.



MARGARITA SORDO, PH.D., M.SC.

Instructor in Medicine, Harvard Medical School
Division of General Internal Medicine and Primary Care
Email: msordo@rics.bwh.harvard.edu

Graduate School: University of Edinburgh, Scotland, UK
Graduate School: University of Sussex, UK
Fellowship: Medical Informatics and Artificial Intelligence,
Cancer Research, UK

Dr. Sordo is a Senior Medical Informatician in the Division of General and Internal Medicine at Brigham and Women's Hospital and an Instructor in Medicine at Harvard Medical School. Her research and scholarly writing include elicitation and representation of clinical knowledge, artificial intelligence and machine learning techniques in medicine and healthcare to further advance clinical decision support. Current work focuses on the application of complex adaptive systems to evaluate the impact of determinants of health and public health policies on individual health.



VALERIE STONE, M.D., M.P.H.

Professor of Medicine, Harvard Medical School
Division of General Internal Medicine and Primary Care
Email: vstone@bwh.harvard.edu

Medical School: Yale University School of Medicine
Graduate School: Harvard T.H. Chan School of Public Health
Residency: Internal Medicine, Case Western Reserve - University
Hospitals of Cleveland
Fellowships: Health Services Research, BWH and Harvard T.H. Chan
School of Public Health; Infectious Diseases, Boston University School
of Medicine

Dr. Stone is Vice Chair for Diversity, Equity, and Inclusion of the Department of Medicine. She is a general internist and HIV/AIDS focused infectious disease specialist. She sees patients in the Phyllis Jen Center for Primary Care where she also precepts residents; on the inpatient side, she teaches on the ITU. Her research and scholarly writing focuses on health equity, primarily in HIV/AIDS care, as well as diversity and inclusion in health care, and healthcare leadership. With Dr. Bisola Ojikutu, she is the co-editor of the textbook HIV/AIDS in U.S. Communities of Color. She was for many years a residency director, so innovations in residency training remains one of her passions and one of her additional areas of scholarship. She currently serves as President of the Association of Chiefs and Leaders in General Internal Medicine (ACLGIM). Dr. Stone is the recipient of numerous awards, including most recently the 2020 W. Lester Henry Award for Advancing Diversity from the American College of Physicians (ACP) and the 2017 Community Hero Award from Action for Boston Community Development (ABCD).



CARLO GIOVANNI TRAVERSO, M.B. B.CHIR., PH.D.

Assistant Professor of Medicine, Part-time, Harvard Medical School
Division of Gastroenterology, Hepatology, and Endoscopy
Email: gtraverso@partners.org

Medical School: Trinity College, University of Cambridge, Cambridge, England, United Kingdom

Graduate School: Johns Hopkins University

Residency: Internal Medicine, Brigham and Women's Hospital and Harvard Medical School

Fellowships: Clinical and Research Fellow, Gastroenterology, Massachusetts General Hospital and Harvard Medical School / Department of Chemical Engineering, Koch Institute, Massachusetts Institute of Technology

Dr. Traverso is a practicing gastroenterologist and biomedical engineer at Brigham and Women's Hospital and Harvard Medical School. His research focuses on the development of novel technologies for drug delivery and sensing via the gastrointestinal tract and aims to transform our ability to treat and diagnose patients through the application of biomedical engineering concepts.



J. KEVIN TUCKER, M.D.

Assistant Professor of Medicine, Harvard Medical School
Division of Renal Medicine
Email: jktucker@partners.org

Medical School: Weill Cornell University Medical College

Residency: Internal Medicine, Massachusetts General Hospital

Fellowship: Nephrology, University of Alabama at Birmingham

A native of Alabama, Dr. Tucker received his undergraduate degree in mathematics from Birmingham-Southern College and his medical degree at Cornell University Medical College. He then completed his residency at Massachusetts General Hospital followed by a fellowship in nephrology at the University of Alabama at Birmingham (UAB). He was on the faculty at UAB for six years prior to joining the faculty at Brigham and Women's Hospital. He served as director of the Joint Nephrology Fellowship of Brigham and Women's Hospital and Massachusetts General Hospital for ten years. Dr. Tucker's educational interests are now focused on continuing medical education at Harvard Medical School. His clinical interest is in the care of patients with end-stage renal disease on hemodialysis and peritoneal dialysis. Dr. Tucker is the Clinical Director of Nephrology at the Brigham and Women's Faulkner Hospital.



GUSTAVO VELÁSQUEZ, M.D., M.P.H.

Instructor in Medicine, Harvard Medical School
Division of Infectious Diseases
Email: gvelasquez@bwh.harvard.edu

Medical School: Northwestern University, Feinberg School of Medicine
Graduate School: Harvard T.H. Chan School of Public Health
Residency Internal Medicine / Howard Hiatt Residency in Global Health Equity, Brigham and Women's Hospital
Fellowship: Clinical and Research Fellow, Infectious Disease, Massachusetts General Hospital and Brigham and Women's Hospital

Dr. Velásquez's research interest is to develop safe, tolerable, and effective treatment regimens for drug-susceptible and drug-resistant tuberculosis (TB). He has experience in programmatic evaluations of multidrug-resistant tuberculosis (MDR-TB) screening and drug-resistance testing in Peru; in outcomes research evaluating MDR-TB regimen composition and TB/HIV coinfection management in the Russian Federation and Peru; and in a Phase 2B dose-ranging clinical trial of high-dose rifampin for drug-susceptible TB in Peru (HIRIF, ClinicalTrials.gov NCT01408914). Dr. Velásquez works with Carole Mitnick, Sc.D. and the endTB consortium (endTB.org) as a co-investigator in an ongoing multi-country Phase 3 clinical trial evaluating novel shortened oral regimens for fluoroquinolone-susceptible MDR-TB (endTB, ClinicalTrials.gov NCT02754765) and its pharmacokinetic and pharmacodynamic sub-study (PandrTB, ClinicalTrials.gov NCT03827811). He is a co-investigator in a forthcoming Phase 3 clinical trial for fluoroquinolone-resistant MDR-TB (endTB-Q, ClinicalTrials.gov NCT03896685). Dr. Velásquez is also an investigator in the AIDS Clinical Trials Group's TB Transformative Science Group.



DAVID WALTON, M.D.

Instructor in Medicine, Harvard Medical School
Division of Global Health Equity
Email: dawlaton@partners.org

Medical School: Harvard Medical School
Graduate School: Harvard T.H. Chan School of Public Health
Residency: Internal Medicine, Brigham and Women's Hospital

For two decades Dr. David Walton has focused on health systems strengthening, systemic improvement and expansion of medical care, and medical infrastructure in resource-poor settings. After obtaining an MD from Harvard Medical School and an MPH from the Harvard School of Public Health, he trained in internal medicine at Brigham and Women's Hospital (BWH).

He currently serves as President and CEO of Build Health International, a non-profit organization dedicated to designing and building high quality health care infrastructure in Low and Middle Income countries.

Dr. Walton has received numerous awards for accomplishments including the Jimmy and Rosalynn Carter Humanitarian Award, and recently named to *GOOD Magazine's* GOOD 100 for 2016. He currently practices medicine at BWH in the Division of Global Health Equity and is an Instructor of Medicine at Harvard Medical School. He serves on several non-profit boards, including Partners In Health and Saint Boniface Haiti Foundation.

BRIGHAM AND WOMEN'S HOSPITAL
DEPARTMENT OF MEDICINE
UNDERREPRESENTED IN MEDICINE
FACULTY DIRECTORY



PUBLISHED JANUARY 2020